

BRICK BY BRICK CAPITAL CAMPAIGN 2024



"The arts, as embodied by the Murray Art Guild ... is a place where dreams grow. Let's help get them a forever home."

— Rickard Hokans

MAG
COMMUNITY ART CENTER

ESTABLISHED 1967

BRICK BY BRICK

A Capital Campaign for MAG's Forever Home

MURRAY ART GUILD

Murray Art Guild was formed in 1967 by a small group of like-minded friends, an agreed-upon mission, and the kindness of community members who offered space and encouragement. Over the next 56 years, MAG's membership, artists, programs, and successes have blossomed—one artist, friend, and event at a time. After decades of growth and achievements, including the 2022 Governor's Award in the Arts for Community Arts, MAG is now a sterling champion for the arts in west Kentucky. And it is a remarkable community spirit that will build MAG's new Forever Home — Brick by Brick.

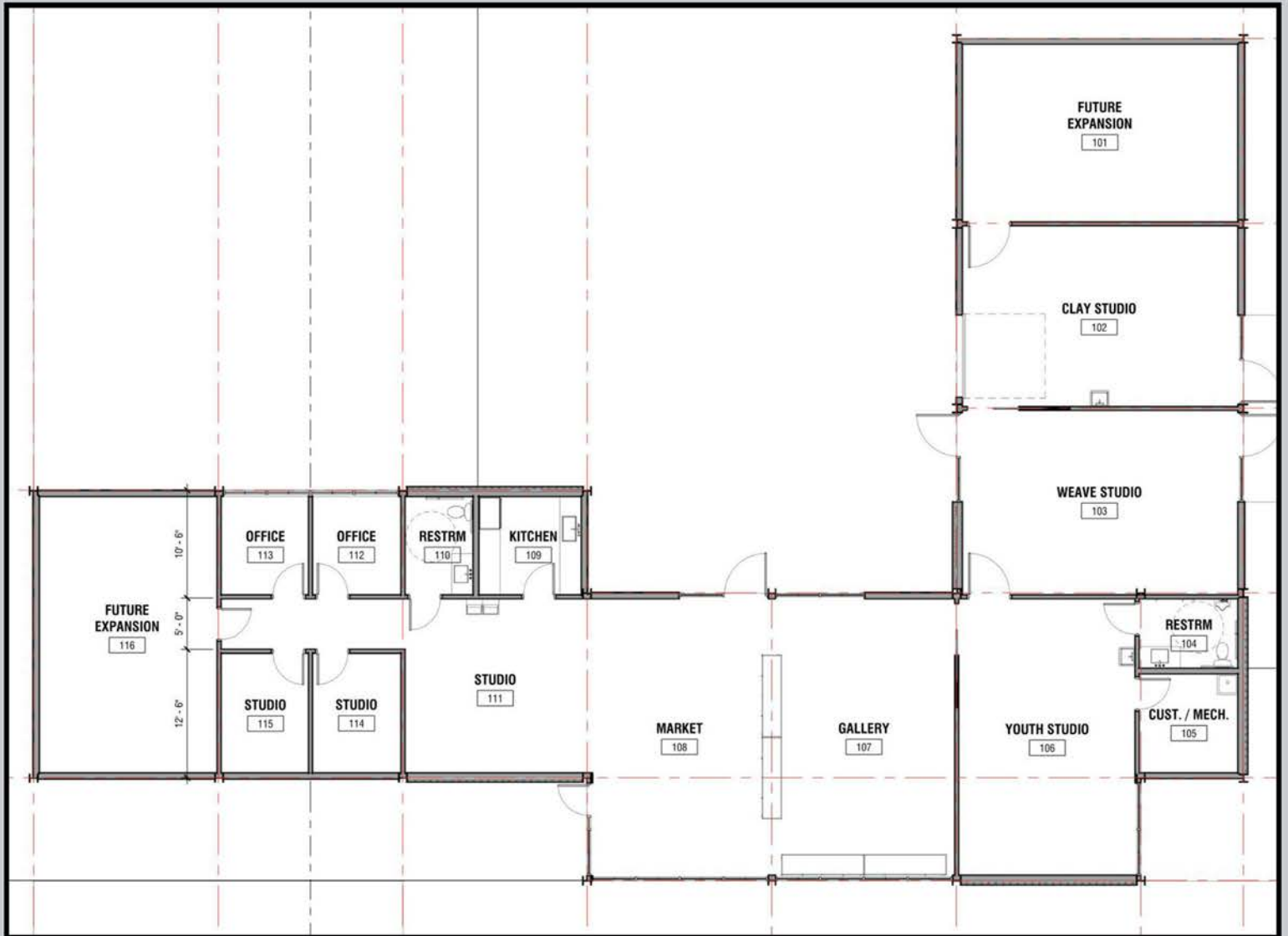
There are salient reasons why MAG desperately needs a new building.

- The current space is tri-level and impossible for many with mobility issues.
- An aging mechanical, plumbing and electrical system requires and depletes both creative energy and financial resources.
- MAG is bursting at the seams! Often a workshop displaces another studio to create needed workspace. The new building will help us maintain robust opportunities for you.

The MAG will need \$1,500,000 to replace its existing facility. Recently, MAG was awarded from the state of Kentucky a Community Development Block Grant, shared with Calloway County. The \$750,000 grant and MAG's existing savings and gifts of \$250,000 bring us two-thirds of the way to our final goal. The remaining need is \$500,000. The amount seems daunting, but MAG's proven success and the support of the Murray-Calloway County community will make it possible to meet this need.

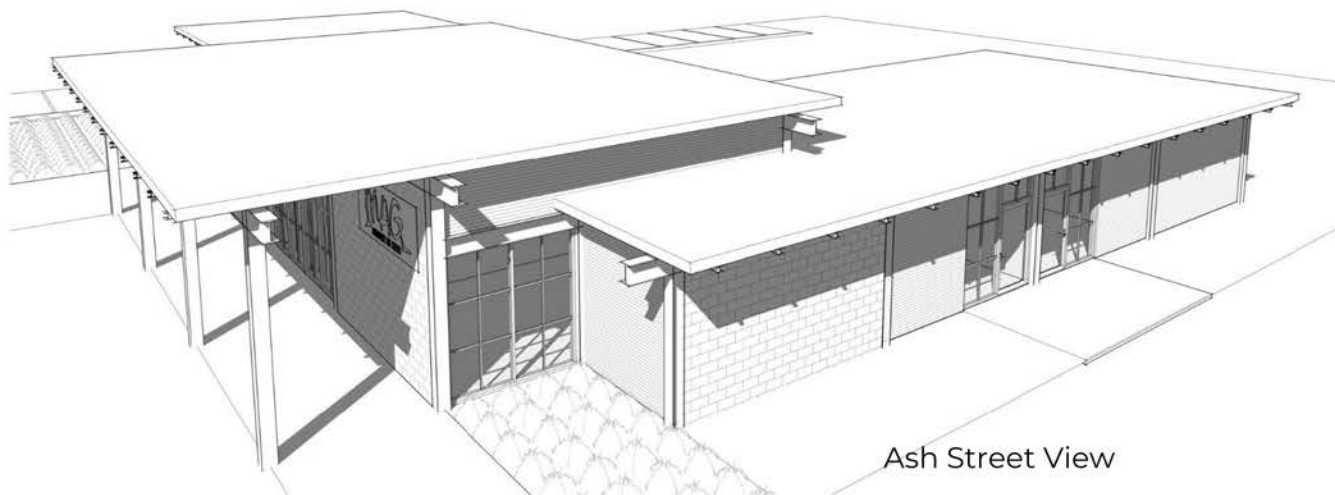
We believe the best approach is to use MAG's historic steady path forward to reach our goal in our inaugural Capital Campaign, BRICK BY BRICK. In the same way MAG has grown year by year, friend by friend, artist by artist, family by family, we ask our Murray Calloway County community to support the final phase toward achieving our Forever Home.



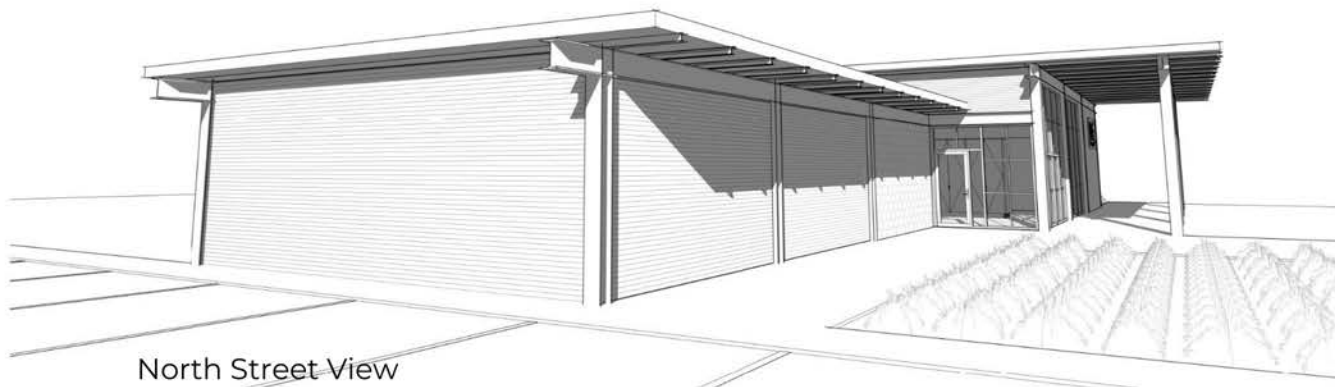


BRICK BY BRICK CAPITAL CAMPAIGN 2024

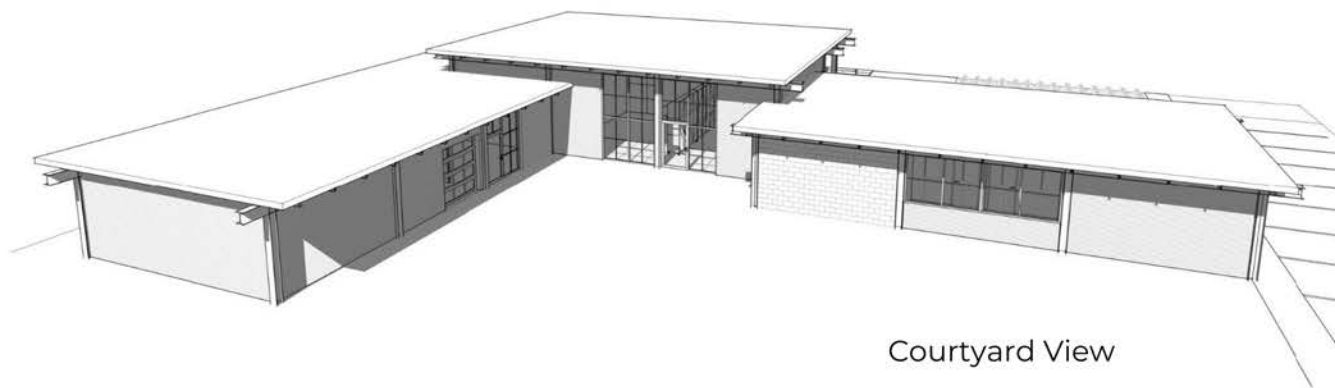
"The market/gallery provides wonderful, unique items that satisfy my love of shopping for gifts or for myself. One problem about shopping at MAG: Although I focus on gifts for others, I end up keeping much of it and going back again to shop for friends and family."
— Kay Bates



Ash Street View

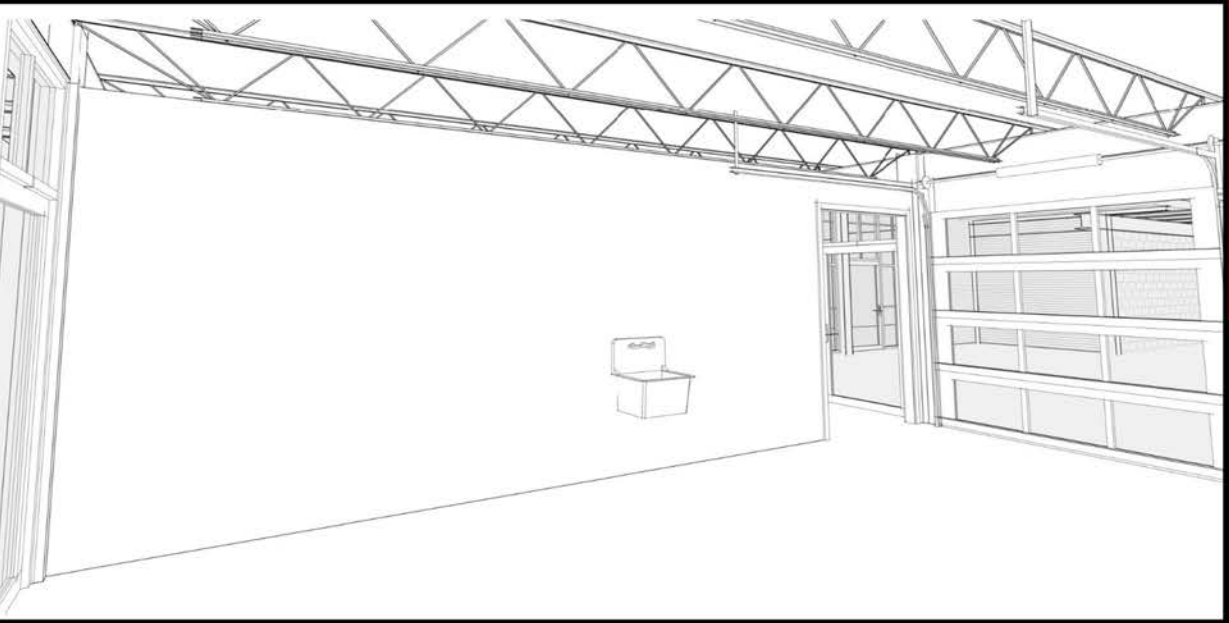


North Street View



Courtyard View

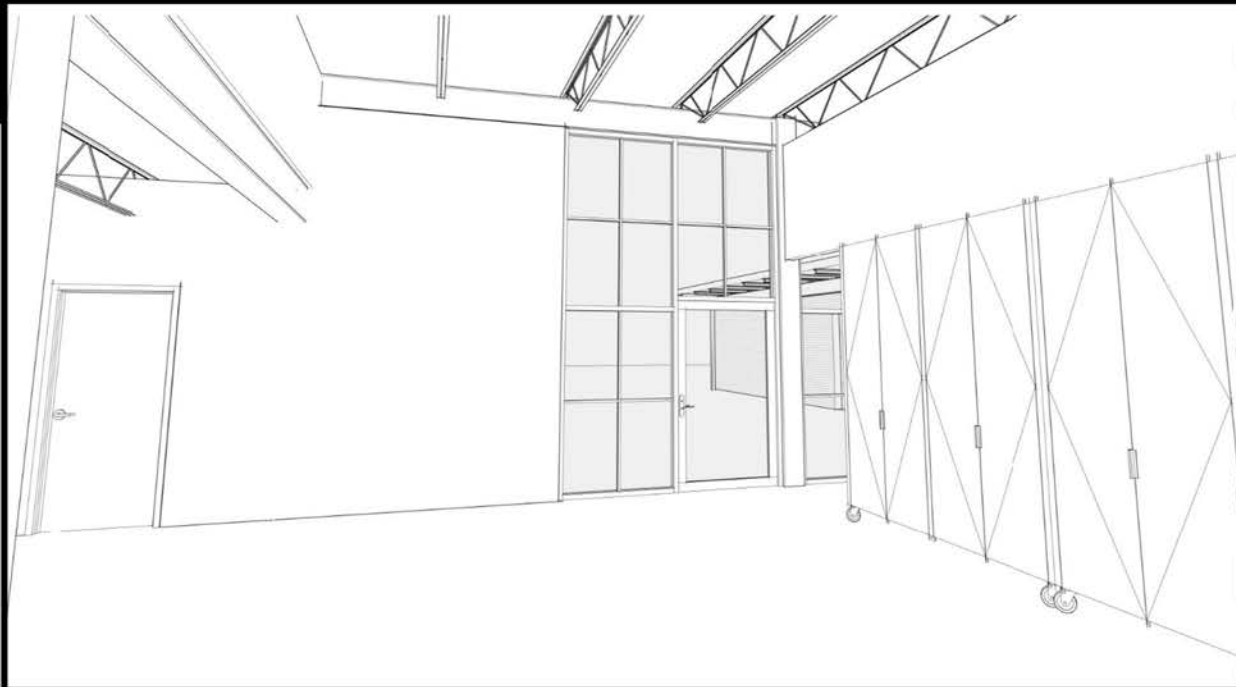
CLAY STUDIO



"Especially rewarding has been the amazing creative adventures offered to the WATCH group and the Side-by-Side program. While these children and adults face many challenges, art is a way for everyone to find joy and purpose."

— Lynn Pesot

WEAVER STUDIO



BRICK BY BRICK CAPITAL CAMPAIGN 2024

"It's been delightful to enjoy four generations of our family participating in the guild. It has been, and will always be, a place to create, socialize and encourage one another in a positive and peaceful atmosphere. A place to be yourself, better yourself, enrich your family, and celebrate everyone's accomplishments."

— Cindy Chrisman

Naming Opportunities

Exhibition Gallery

This is the most visible naming opportunity. MAG's gallery is our most often visited space and welcomes 400 visitors each year for 6 exhibitions by solo and group artists.

\$100,000

Youth Studio

Our youth programs reach approximately 300 children each year. The youth studio will bear your name in perpetuity in honor of the MAG's and our artist teachers who give their time and talent to bring expressive opportunities to the children of our community.

\$50,000

Weaving Studio

Murray has long been a home to weavers of extraordinary skill and talent. Owning a loom can require a great deal of space. MAG's weaving studio allows weavers to hone their craft in a shared community space without the expense or space requirements.

\$50,000

Clay Studio

Like weaving, clay work requires space and equipment many may not have access to. MAG's clay studio houses wheels, work areas, and kilns so that anyone in the community may learn to create ceramic art and/or functional goods.

\$50,000



Bronze Plaques

MAG's entrance areas will be graced with bronze plaques honoring the following gifts.

Large Bronze Plaque (16" diameter)	\$25,000
Medium Bronze Plaque (10" diameter)	\$10,000
Small Bronze Plaque (5" diameter)	\$5,000

Outdoor Plaza Pavers

MAG's outdoor gathering plaza is another opportunity to show our thanks for community members working with us to build a new home for the arts.

Large Paver	\$1,000
Medium Paver	\$500
Small Paver	\$100

In Memory Or Honor Of: Any gift may be offered in memory of your loved ones. All naming level gifts will ensure their name graces one or more spaces in the new building and grounds.

Anonymous: Anyone who wishes their gift to remain anonymous may request it. MAG will always honor your request.



Thank you for considering a gift to MAG's Brick By Brick Campaign.

You can make a one-time gift or spread your giving over the 18-month construction of this project.

We appreciate your support!

“The Murray Art Guild is where creative people are nurtured, while the community enjoys living in a center of exciting thought and creation.”
— Jean Lorrah

Brick by Brick Giving Pledge

DATE: _____

DONOR (Full Name Printed):

ADDRESS: _____

PHONE: _____

PROMISED DATE OF FIRST INSTALLMENT: _____

AMOUNT: _____

PROMISED DATE OF SECOND INSTALLMENT: _____

AMOUNT: _____

DONOR SIGNATURE: _____



Thank you!

The MAG Community Art Center is a community based non-profit organization dedicated to supporting arts enrichment with the mission of “Motivating artistic growth through community arts development.”

500 N. 4th Street, Murray, KY 42071

HOURS: Tues. - Fri. 10am - 5pm

Sat. 10am-2pm

270.753.4059

email: murrayartguild@gmail.com

www.murrayartguild.org

